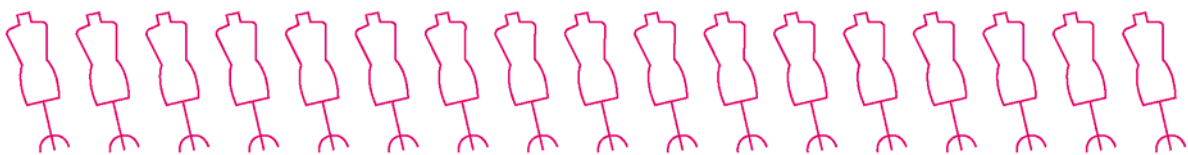


Creative Patterns

School Uniform Pattern Catalogue



Tuesday, 15 September 2009
NOTE: Information subject to change.

Creative² Patterns

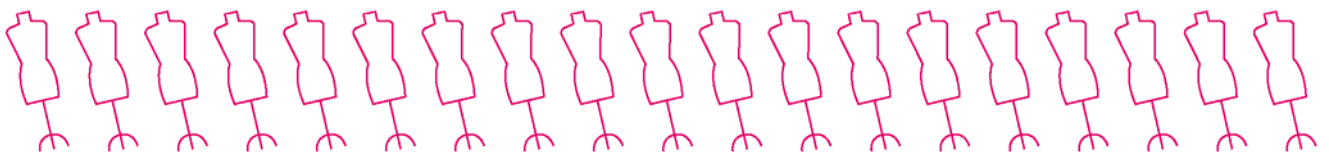
At Creative Patterns we strive to create and deliver the best quality patterns for use in the manufacture of school uniforms, while providing an exceptional level of customer service.

Our goal is to deliver high quality school uniform patterns that are easy to assemble for all customers at a local, regional and national level. Creative Patterns value all of their customers and aim to maintain an exceptional level of customer service and professionalism at all times.

Our master dressmaker has been in the fashion and design industry for over 30 years. All of the patterns we use and create are based on long term experience with school uniform manufacture and design.

We are able to create custom patterns and variations upon request, and need as little as a hand drawing or picture of a completed garment to work from in order to create a complete and customized pattern to suit any customer needs.

Please check our catalogue for the available, standard designs and further information on what products we have.



Website: <http://www.creativepatterns.com.au>

How To Order

The ordering process for Creative Patterns is very straight forward:

- (i) Select the Pattern Style (Design).
- (ii) Select the Pattern Size.
- (iii) Select the quantity requiredⁱ.
- (iv) Select the payment option and provide details.
- (v) Provide the shipping details for the order.
- (vi) Confirm the order details.
- (vii) Place the order.
- (viii) Order preparation and delivery takes from 7 to 10 working daysⁱⁱ.

i) A minimum order quantity of 5 patterns per size, per style is required. Orders may be placed for less than this quantity but an additional manufacturing charge will be added to the order.

ii) Some orders may be completed very quickly depending on the quantity of patterns required. This time frame is an estimate only and may vary.

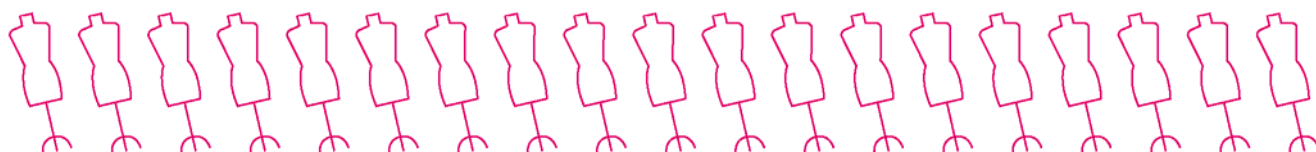
Please Note: All patterns are made to order. As a result, all orders must be paid for before manufacturing can begin.

At the current time the options available for placing an order with Creative Patterns include:

- Telephone
- Via Email
 - ⇒ sales@creativepatterns.com.au
 - ⇒ information@creativepatterns.com.au
- Online
 - ⇒ <http://www.creativepatterns.com.au/shop>

The available payment options for Creative Patterns orders currently include:

- Cheque
- Money Order
- Direct Deposit
- Paypal
- Credit Card over the telephone.
- Credit Card online, through our secure website.



Website: <http://www.creativepatterns.com.au>

Pattern Sizing Information

Children's Sizes			
Size	Chest	Waist	Hip
4 (22)	56cm (22")	56cm (22")	61cm (24")
6 (24)	61cm (24")	61cm (24")	66cm (26")
8 (26)	66cm (26")	66cm (26")	71cm (28")
10 (28)	71cm (28")	71cm (28")	76cm (30")
12 (30)	76cm (30")	76cm (30")	81cm (32")
14 (32)	81cm (32")	81cm (32")	86cm (34")

Ladies Sizes			
Size	Chest	Waist	Hip
8 (30)	76cm (30")	76cm (30")	81cm (32")
10 (32)	81cm (32")	81cm (32")	86cm (34")
12 (34)	86cm (34")	86cm (34")	91cm (36")
14 (36)	91cm (36")	91cm (36")	96cm (38")
16 (38)	96cm (38")	96cm (38")	101cm (40")
18 (40)	101cm (40")	101cm (40")	106cm (42")

Adult's Sizes (Skirts & Pants only)		
Size	Waist	Hip
6	61cm (24")	76cm (30")
8	63cm (25")	81cm (32")
10	66cm (26")	86cm (34")
12	71cm (28")	91cm (36")
14	76cm (30")	97cm (38")
16	81cm (32")	102cm (40")

NOTE: Larger sizes are available for selected uniform patterns. Contact Creative Patterns for further information.



Pattern Sample



Style <x>

Size <y>

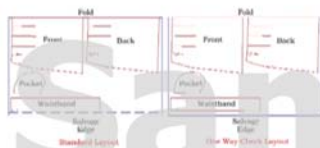
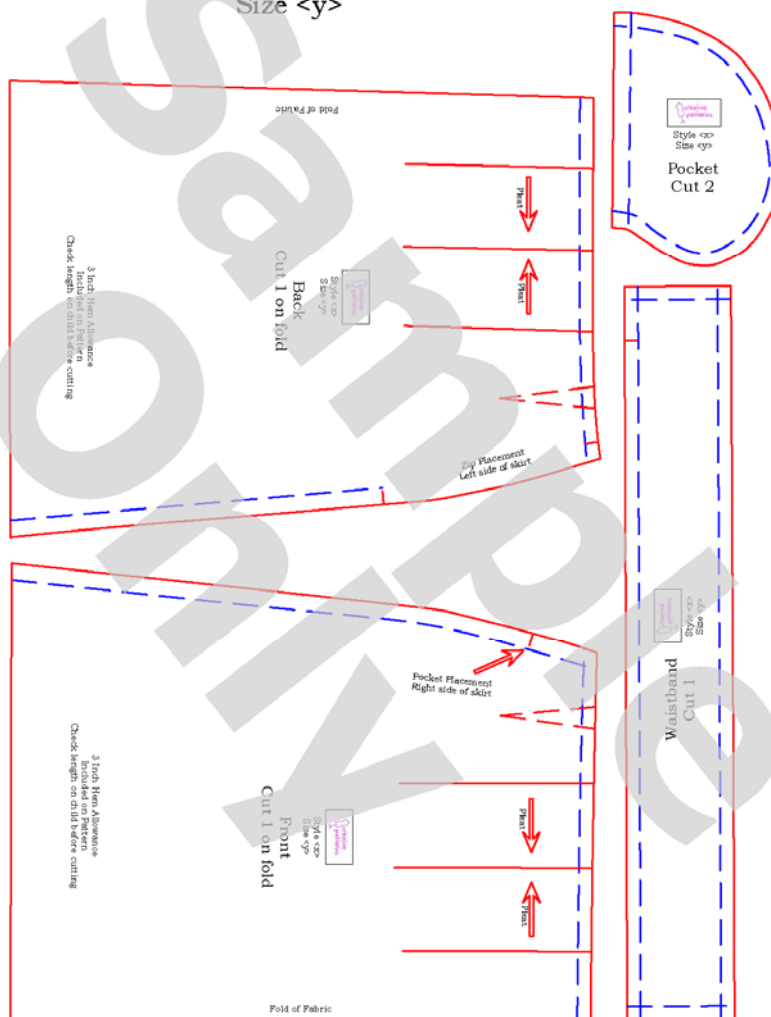


Figure 4
Pattern Layout on Fabric



Style <x>

Size <y>

Waist	Hip	150cm (60") Fabric
24" (61cm)	30" (76cm)	1.2m
Allow additional 20cm for check pattern matching		
Notches: 20cm side slip, 1cm pocket slip		
Cotton, Blended		

Table 1 - Fabric requirements & Notches

Phone: 0433 333 333
Internet: <http://www.creativepatterns.com.au>
Email: info@creativepatterns.com.au

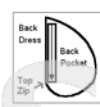


Figure 1
See Step 12 opposite

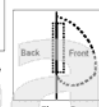


Figure 2
See Step 16 opposite

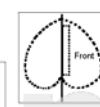


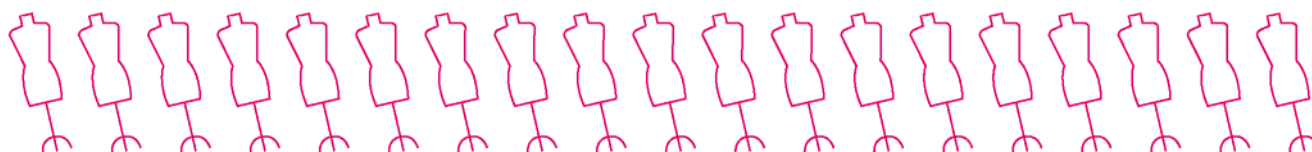
Figure 3
See Step 20 opposite

1. Nick top of front and back skirt where pleat lines are.
2. Fold the two outside nicks together and sew pleat down as marked.
3. On fronts, place centre nick to seam just sewn, folding pleat out flat and press flat.
4. Sew down and around pleat on right side of material, using 1/4" (6mm) seam. (Make sure that pleat is flat underneath.)
5. Repeat steps 2 to 4 for back of skirt.
6. Sew darts on front and back of skirt as marked.
7. Mark nicks on band from waistband pattern, this is waist measurement plus 1/2" (1.2cm).
8. Over lock side seams and edge of waistband that is not nicked.
9. Join right hand seam (front piece on top, right hand edge) sewing down 2 1/2", leave 6 1/2" (16cm) opening for pocket where indicated on pattern, and sew rest of side seam using 3/8" (15mm) seam.
10. Over lock pocket straight edge separately as a pair.
11. Attach zip to pocket, top of zip to bottom of pocket. (See Figure 1).
12. Attach pocket piece with zip attached to side back seam pocket opening.
13. Attach other side of zip to front side seam.
14. Attach second pocket piece to front side seam.
15. Open pocket pieces out flat, sew on right side of front from top of zip to bottom of zip, 3/8" (9mm) in from side seam, sewing through dress and front pocket piece. (See Figure 2).

16. Pin pocket pieces toward front, cut off excess.
17. Attach pocket pieces together using a 1/2" (12mm) seam.
18. Over lock around pocket.
19. Using Zipper foot sew close to zip on back of dress and across bottom and top of the zip through the dress and pocket, facing pocket towards front of dress. (See Figure 3).
20. Sew opposite side seam, leaving opening for 8" (20cm) zip.
21. Sew zip into side seam.
22. Nick centre front of top of skirt, keeping side seams together.
23. Nick centre front of waistband keeping nicks together.
24. Pin centre nick of waistband to centre nick of skirt and other nicks to either side of back zip.
25. Attach waistband right sides together, using 1/2" (12mm) seam. Keep the longer extension overlapping to the left side of the skirt.
26. Fold waistband, in half, right sides together. Stitch extension using 1/2" (12mm) seam and turn through to right side.
27. Stitch opposite end of waistband level with end of skirt making sure that the seam is facing up.
28. Pin stitch around waistband.
29. Pin button hole and button on waistband as required.
30. Over lock hem of skirt.
31. Hem skirt as required.

No Refunds

For retail sale only - not for hire or copy



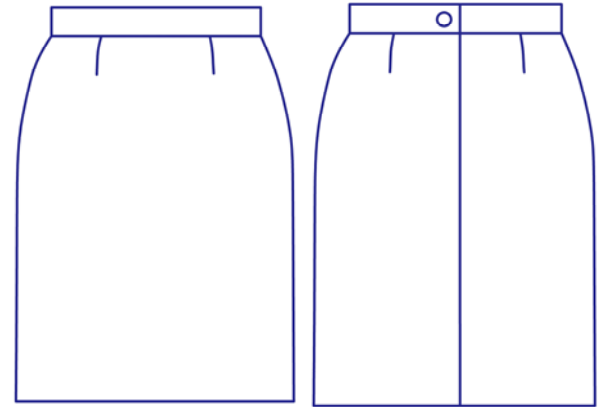
Website: <http://www.creativepatterns.com.au>

Style 125

Sizes: 6 ~ 16

Notes: Sized for high school.

Description: Straight skirt, fitted waistband, with darts front and back, zip pocket, back zip opening.

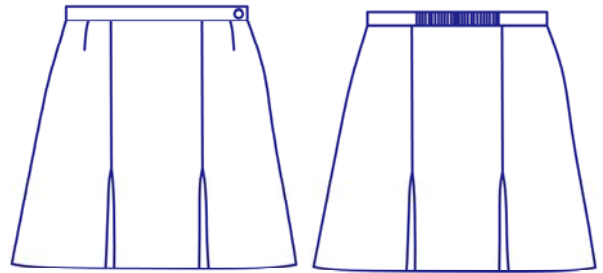


Style 134

Sizes: 6 ~ 16

Notes: Sized for high school.

Description: Pleated skirt, 2 inverted box pleats front and back, waistband with darts at front and elastic at centre back, zip pocket, side zip opening.

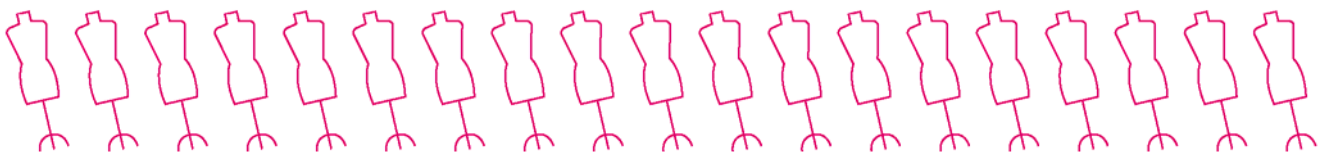
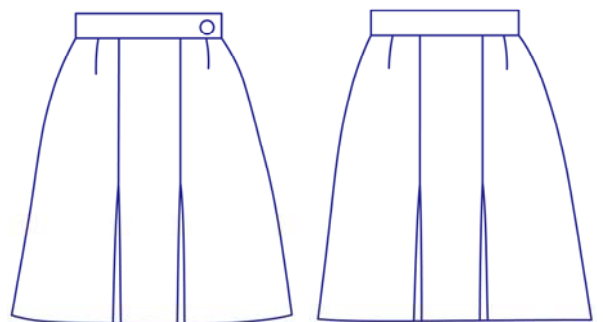


Style 135

Sizes: 6 ~ 20

Notes: Sized for high school.

Description: Pleated skirt, 2 inverted box pleats front and back, fitted waistband with darts front and back, zip pocket, side zip opening.

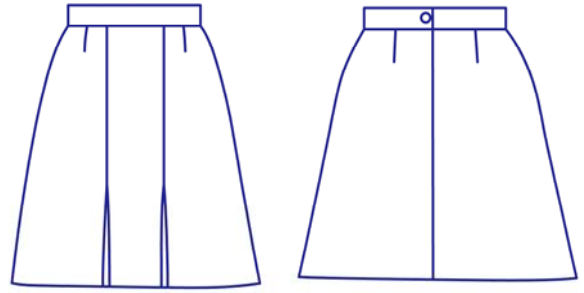


Style 145

Sizes: 6 - 16

Notes: Sized for high school.

Description: Pleated skirt. 2 inverted box pleats front, 1 line back, fitted waistband with darts at front and back, zip pocket, back zip opening.

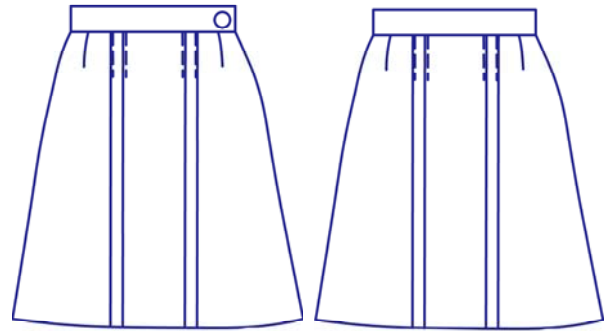


Style 155

Sizes: 6 - 16

Notes: Sized for high school.

Description: Pleated skirt, 2 double knife pleats front and back, fitted waistband with darts at front and back, zip pocket, side zip opening.

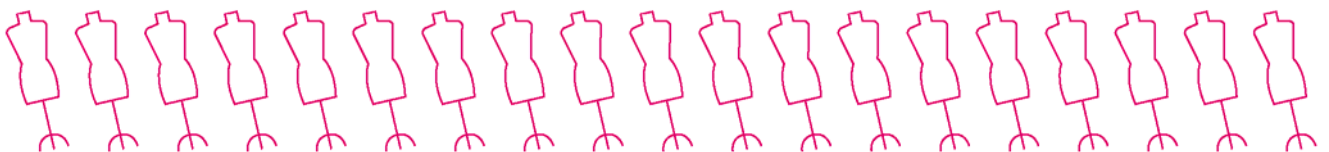
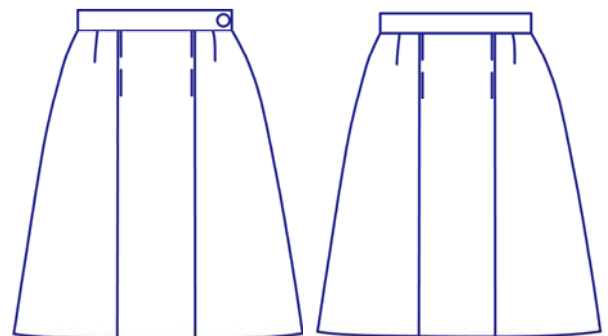


Style 165

Sizes: 6 - 16

Notes: Sized for high school.

Description: Pleated skirt, 2 knife pleats front and back, fitted waistband with darts front and back, zip pocket, side zip opening.

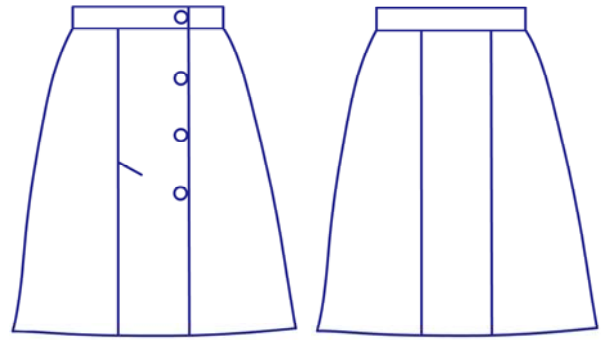


Style 175

Sizes: 6 - 16

Notes: Sized for high school.

Description: Wrap-round skirt, knife pleat right front, overlaps and buttons on left front, back has 3 panels, waistband, zip pocket.

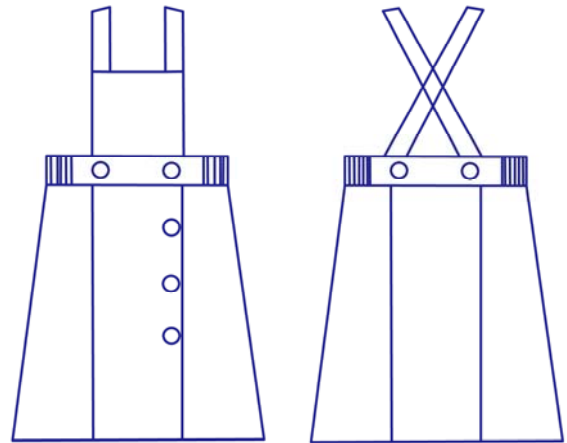


Style 177

Sizes: 4 (22) - 14 (32)

Notes: Sized for primary school.

Description: Bib and brace pinafore, wrap-round skirt knife pleat right front, overlaps and buttons on left front, back has 3 panels, waistband with side elastic, zip pocket.

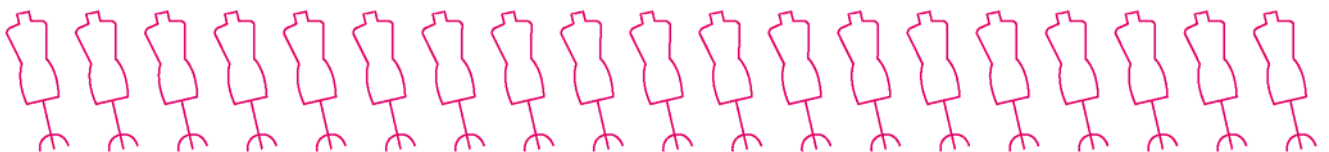
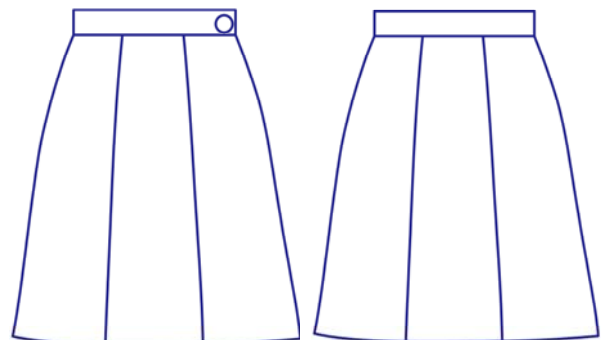


Style 185

Sizes: 6 - 16

Notes: Sized for high school.

Description: 6 gore A-line skirt, 3 panels front and back, fitted waistband, zip pocket, side zip opening.

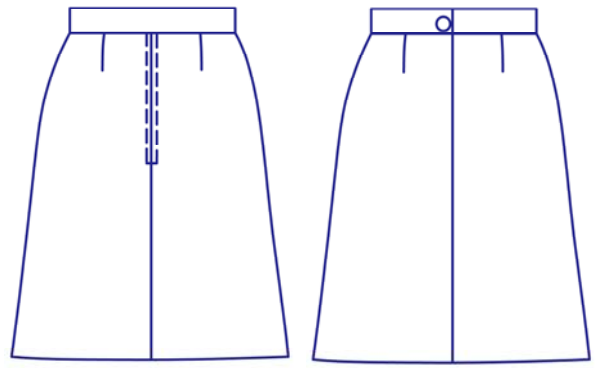


Style 195

Sizes: 6 ~ 16

Notes: Sized for high school.

Description: Pleated skirt, centre front inverted box pleat, fitted waistband with front and back darts, zip pocket, back zip opening.

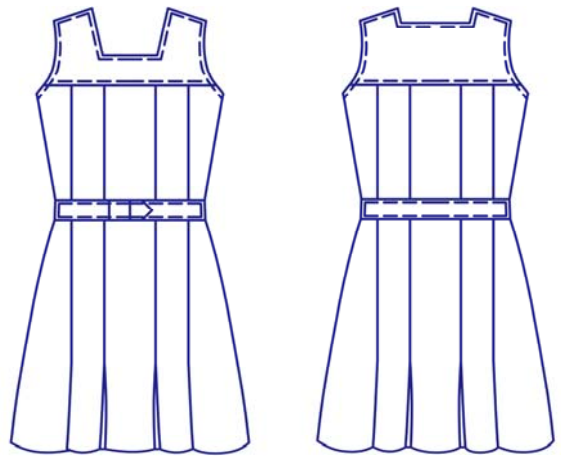


Style 282

Sizes: 4 (22) ~ 14 (32)

Notes: Sized for primary school.

Description: Box pleated pinafore, 3 box pleats front and back, double yoke, zip pocket, self fabric belt.

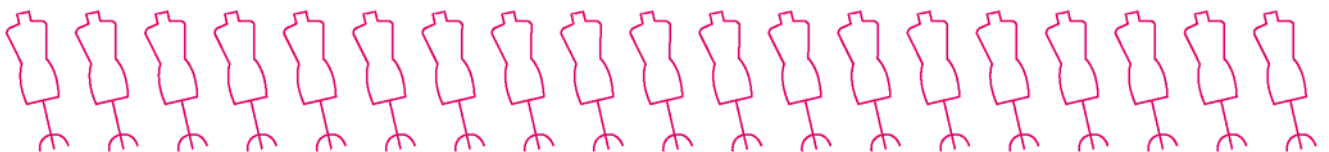
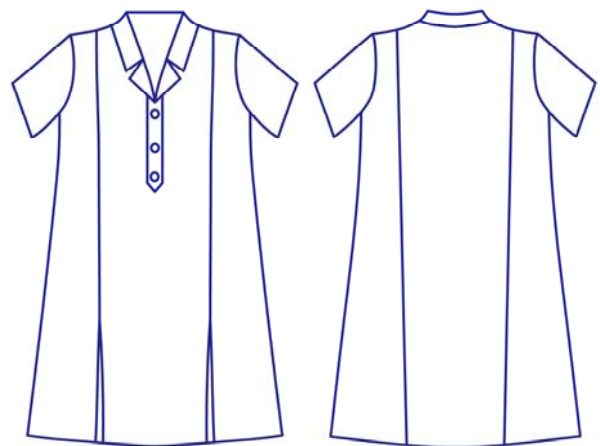


Style 290

Sizes: 4 (22) ~ 14 (32)

Notes: Sized for primary school.

Description: Princess line dress, 2 inverted pleats front hemline, 3 piece back, tab front buttoned opening with shirt collar, short sleeves, zip pocket.

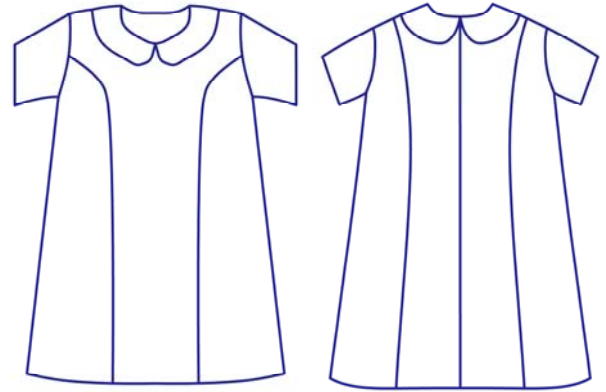


Style 291

Sizes: 4 (22) ~ 14 (32)

Notes: Sized for primary school.

Description: Princess line dress, 3 piece front, side panel starts at armhole, 3 piece back, peter pan collar, short sleeve, zip pocket, back zip opening.

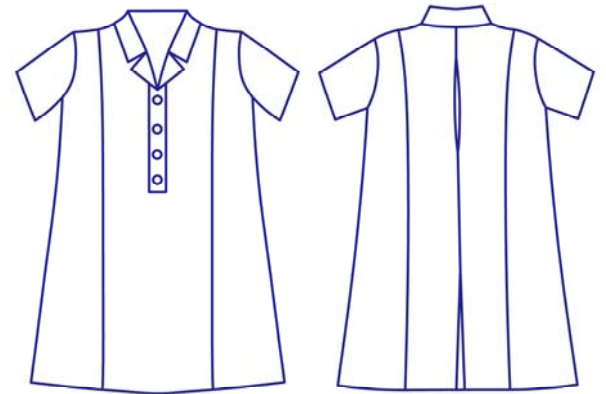


Style 292

Sizes: 4 (22) ~ 14 (32)

Notes: Sized for primary school.

Description: Princess line dress, 3 piece front, 3 piece back with action back bodice and inverted box pleat at hemline, tab front buttoned opening with shirt collar, short sleeve, zip pocket.

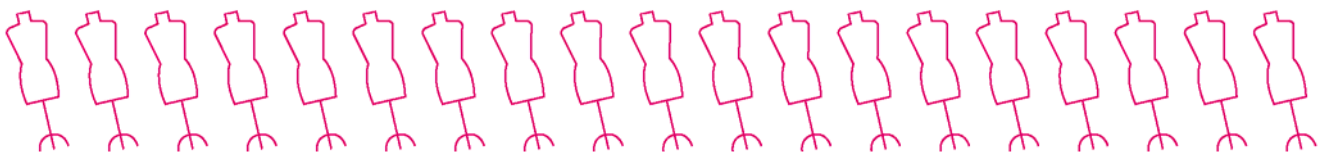
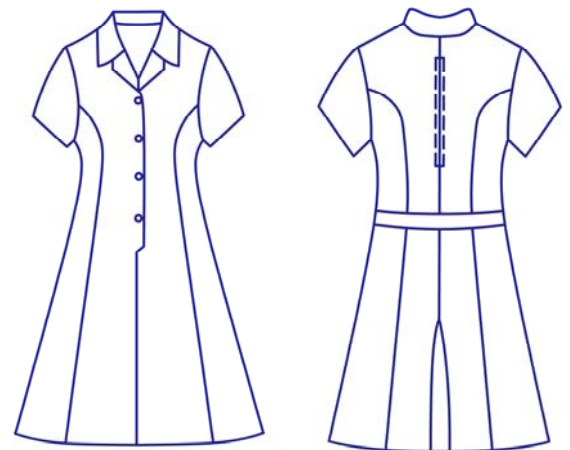


Style 293

Sizes: 4 (22) ~ 14 (32)

Notes: Sized for primary school.

Description: Sized for primary school

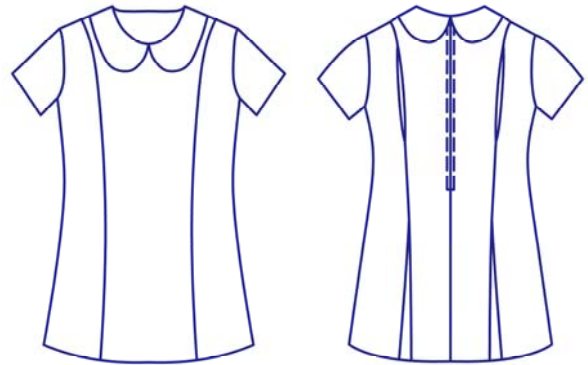


Style 294

Sizes: 4 (22) ~ 14 (32)

Notes: Sized for primary school.

Description: Princess line dress, 3 piece front, 4 piece back with 2 action pleats in back bodice and 2 inverted box pleats at hemline, peter pan collar, short sleeve, zip pocket, back zip opening.

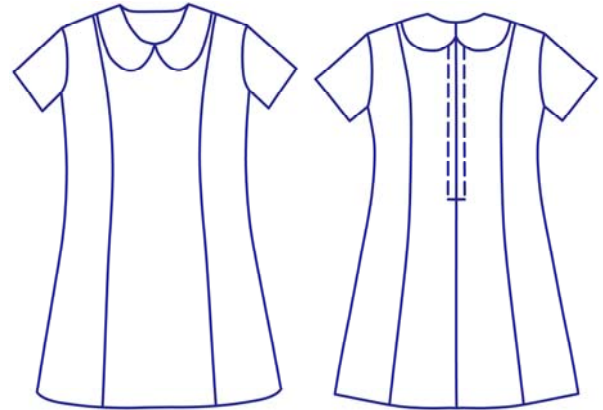


Style 295

Sizes: 4 (22) ~ 14 (32)

Notes: Sized for primary school.

Description: Princess line dress, 3 piece front, 4 piece back, peter pan collar, short sleeve, zip pocket, back zip opening.

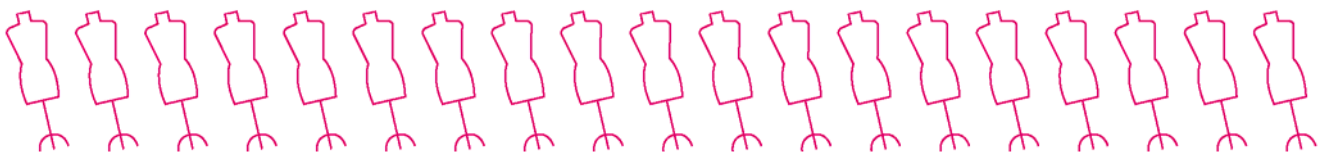
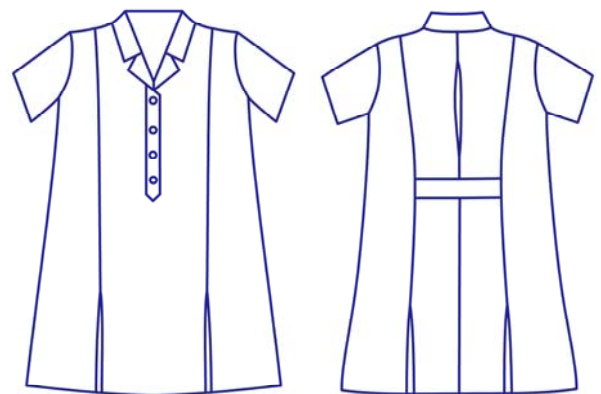


Style 296

Sizes: 4 (22) ~ 14 (32)

Notes: Sized for primary school.

Description: Princess line dress, 3 piece front with 2 inverted pleats at hemline, 3 piece back has action pleat in centre back with band at waistline and 2 inverted box pleats at hemline, buttoned tab front opening with shirt collar, short sleeve, zip pocket.

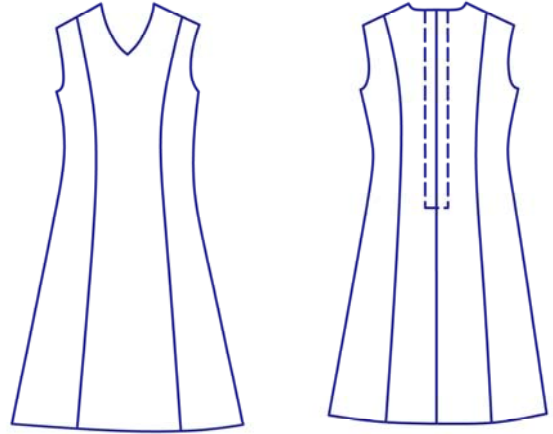


Style 297

Sizes: 4 (22) ~ 14 (32)

Notes: Sized for primary school.

Description: Princess line dress, 3 piece front, 4 piece back, "V" neck, sleeveless, zip pocket, back zip opening.

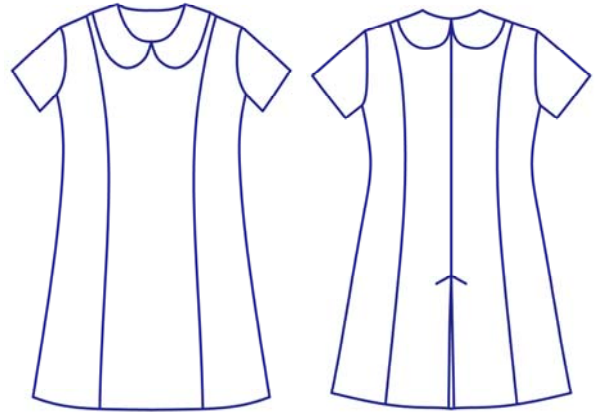


Style 298

Sizes: 4 (22) ~ 14 (32)

Notes: Sized for primary school.

Description: Princess line dress, 3 piece front, 4 piece back with inverted box pleat at hemline, peter pan collar, short sleeve, back zip opening.

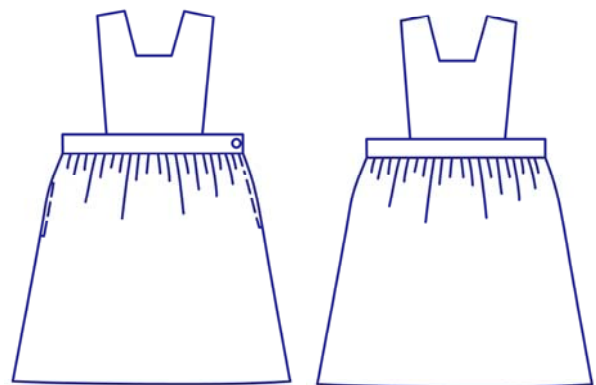


Style 313

Sizes: 4 (22) ~ 14 (32)

Notes: Sized for primary school.

Description: Pinafore (skirt with bib), gathered skirt with waistband, front and back bib, pocket zip, side zip opening.

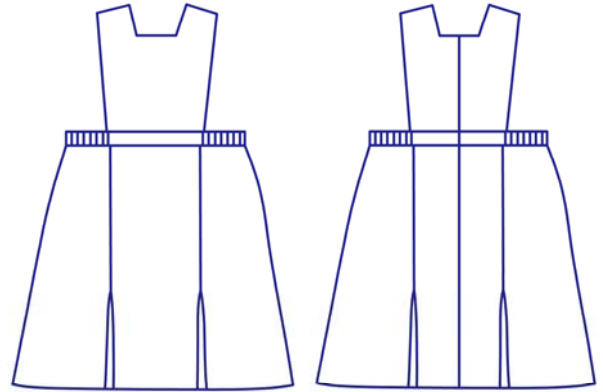


Style 315

Sizes: 4 (22) ~ 14 (32)

Notes: Sized for primary school.

Description: Pinafore, consists of skirt with 2 inverted box pleats front and back, waistband with elastic at sides, zip pocket, and bib attached at waistband with zip opening in back.

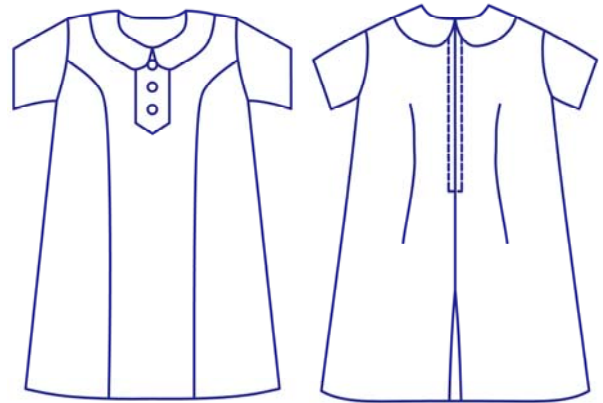


Style 383

Sizes: 4 (22) ~ 14 (32)

Notes: Sized for primary school.

Description: Princess line dress, 3 piece front, side panel starts at armhole, sewn on tab with buttons, 1-line back with darts and inverted box pleat at hemline, peter pan collar, short sleeve. Zip pocket, back zip opening.

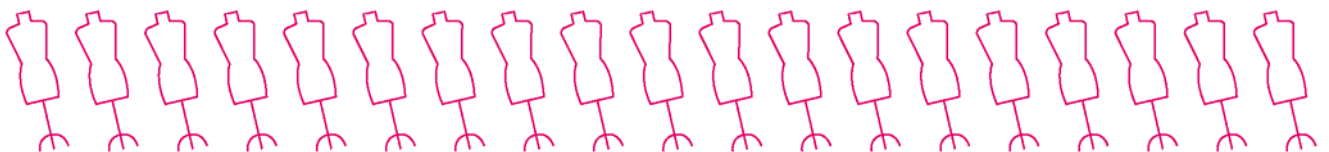
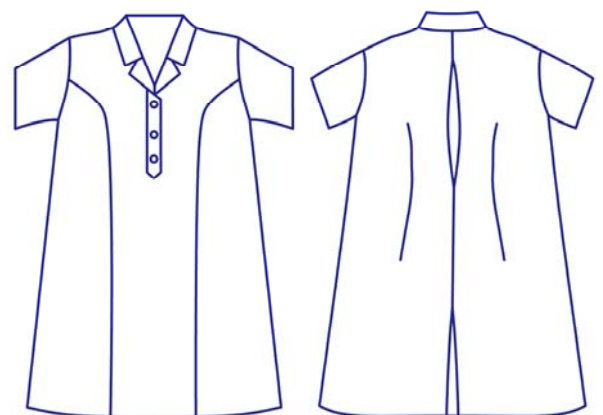


Style 384

Sizes: 4 (22) ~ 20 (42)

Notes: <Some Sizing>

Description: <Some Description>

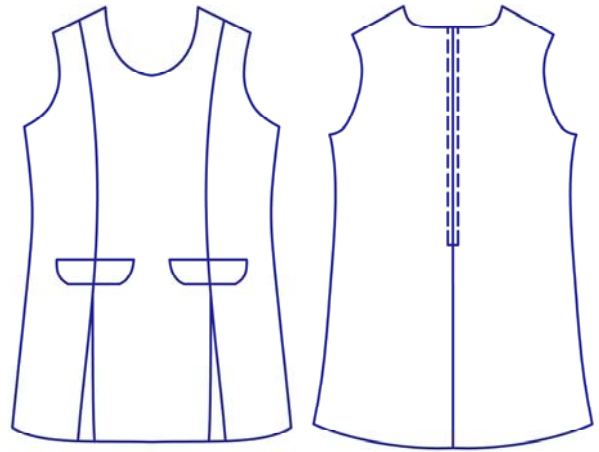


Style 390

Sizes: 4 (22) ~ 14 (32)

Notes: Sized for primary school.

Description: Princess line dress, 3 piece front with 2 inverted box pleats at hemline, A-line back round neckline, sleeveless, zip pocket, back zip opening.

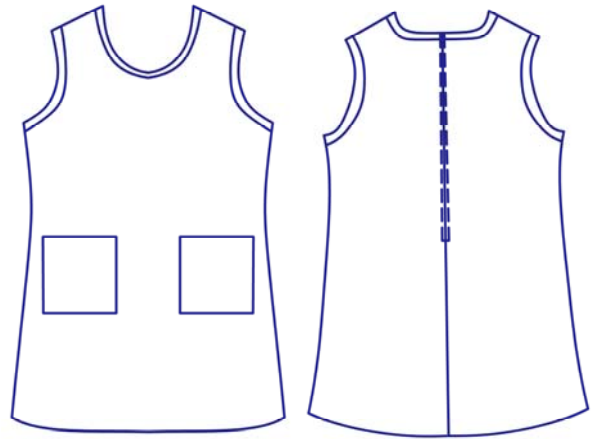


Style 400

Sizes: 4 (22) ~ 14 (32)

Notes: Sized for primary school.

Description: A-line dress, round neck, sleeveless, binding around neck and armholes, patch pockets, back zip opening.

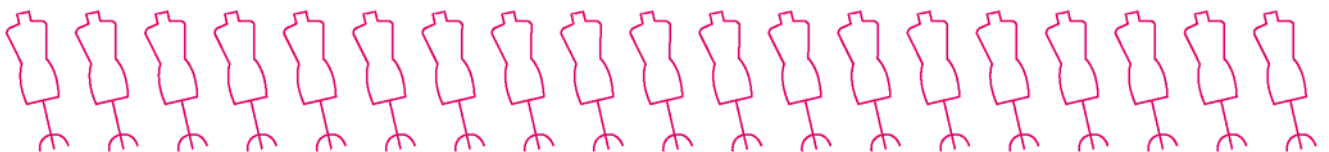
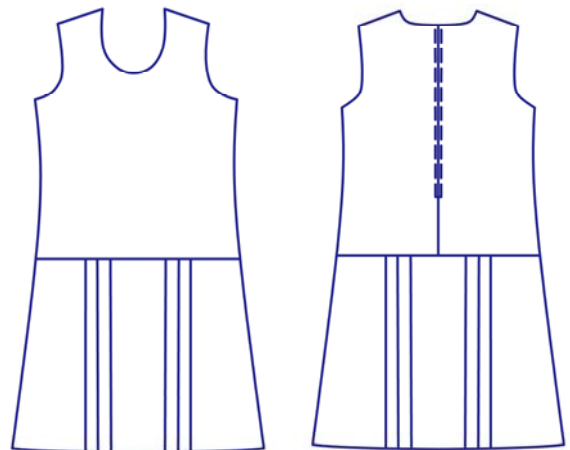


Style 410

Sizes: 4 (22) ~ 14 (32)

Notes: Sized for primary school.

Description: Drop waist dress, A-line bodice, front and back skirts have 2 knife pleats on each side of centre box pleat, round neckline sleeveless, zip pocket, back zip opening.

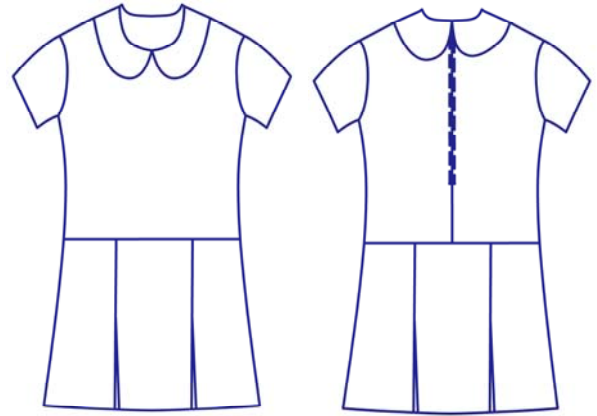


Style 415

Sizes: 4 (22) ~ 14 (32)

Notes: Sized for primary school.

Description: Drop waisted dress, A-line bodice, front and back skirts have 2 inverted box pleats, peter pan collar, short sleeve, zip pocket, back zip opening.

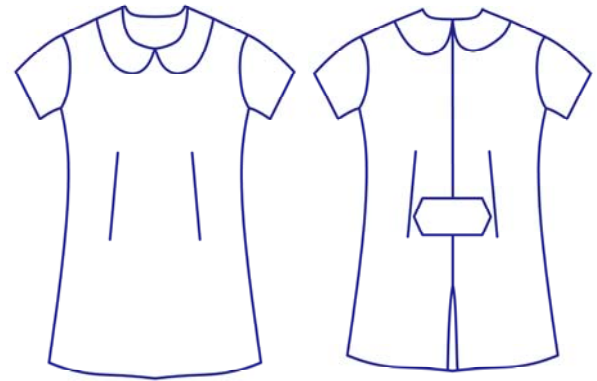


Style 422

Sizes: 4 (22) ~ 14 (32)

Notes: Sized for primary school.

Description: A-line dress, darts front and back, tab on back below zip, back has inverted box pleat at hemline, peter pan collar, short sleeves, zip pocket, back zip opening.

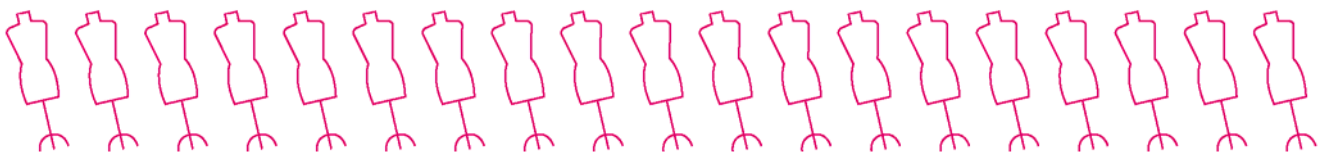
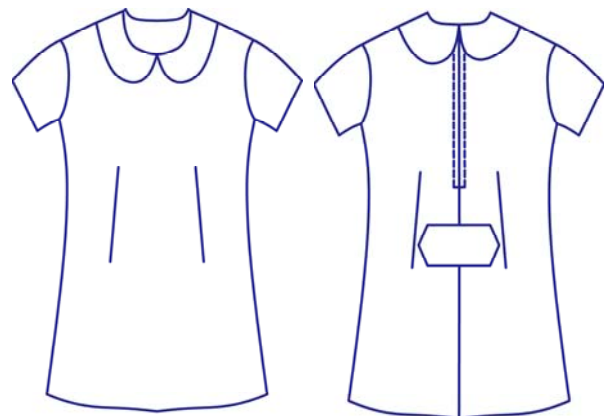


Style 423

Sizes: 4 (22) ~ 14 (32)

Notes: Sized for primary school.

Description: A-line dress, darts front and back, tab on back below zip, peter pan collar, short sleeves, zip pocket, back zip opening.

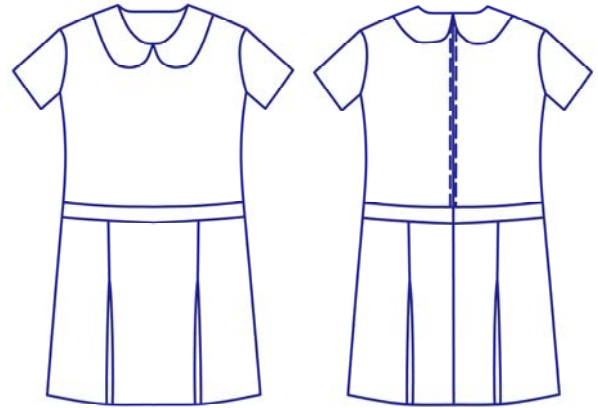


Style 425

Sizes: 4 (22) ~ 14 (32)

Notes: Sized for primary school.

Description: Drop waisted dress, fl-line bodice, joins to skirt with hip band, front has 2 inverted box pleats, back skirt has back seam and 2 inverted box pleats, peter pan collar, short sleeve, zip pocket, back zip opening.

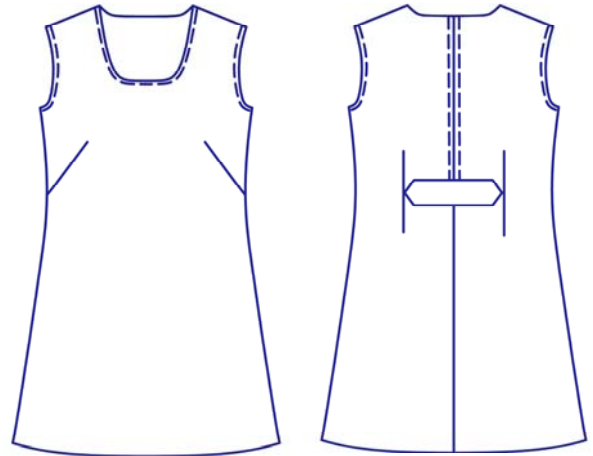


Style 555

Sizes: 4 (22) ~ 14 (32)

Notes: Sized for primary school.

Description: fl-line dress, front side darts, back waist darts, tab sewn on back below zip, round neckline, sleeveless, zip pocket, back zip opening.

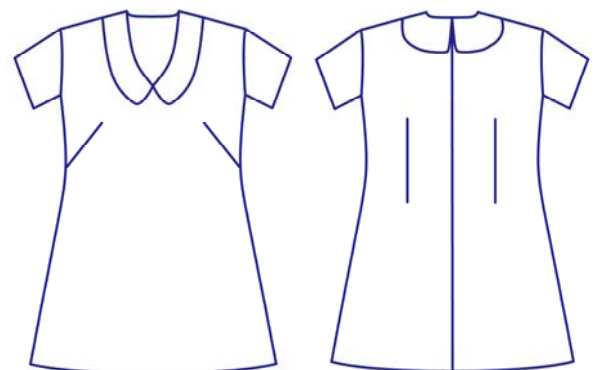


Style 648

Sizes: 4 (22) ~ 14 (32)

Notes: Sized for primary school.

Description: fl-line dress, front side darts, back waist darts, short sleeves, "V" neckline with rounded collar, zip pocket, back zip opening.

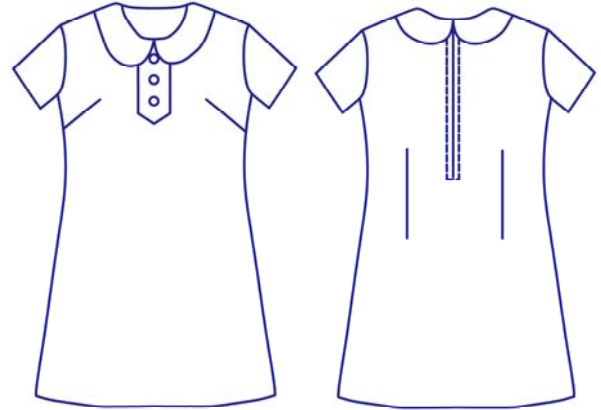


Style 649

Sizes: 4 (22) ~ 14 (32)

Notes: Sized for primary school.

Description: A-line dress, front side darts, sewn on tab with buttons, back waist darts, short sleeves, Peter pan collar, zip pocket, back zip opening.

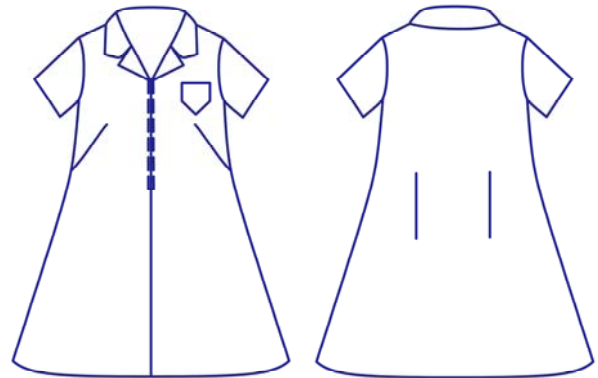


Style 773

Sizes: 4 (22) ~ 14 (32)

Notes: Sized for primary school.

Description: A-line dress, front side darts, back waist darts, short sleeve, small patch pocket, zip pocket, front zip opening with shirt collar.

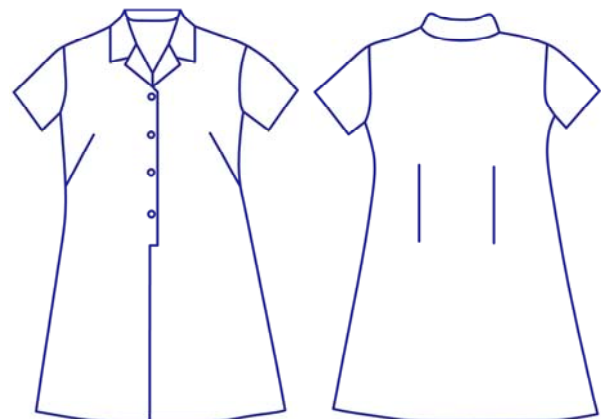


Style 775

Sizes: 4 (22) ~ 14 (32)

Notes: Sized for primary school.

Description: A-line dress, front side darts, back waist darts, short sleeves, zip pocket, buttoned front opening with shirt collar.

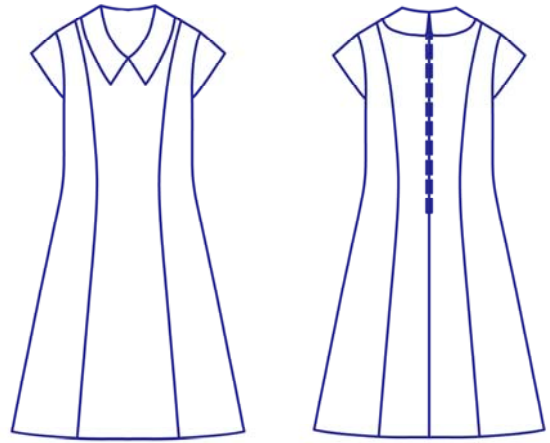


Style 780

Sizes: 4 (22) ~ 14 (32)

Notes: Sized for primary school.

Description: Princess line dress, 3 piece front, 4 piece back, "V" neck collar, short sleeves, zip pocket, back zip opening.

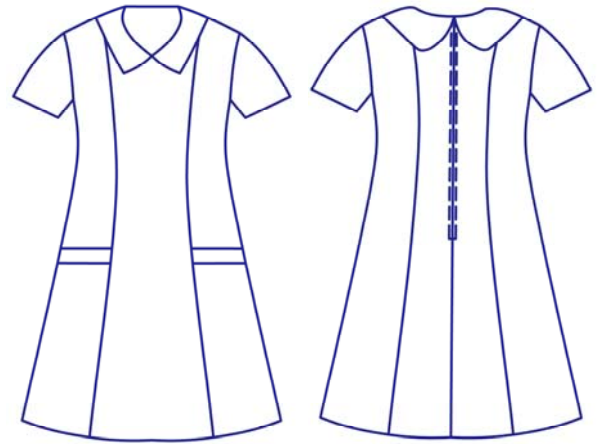


Style 880

Sizes: 4 (22) ~ 14 (32)

Notes: Sized for primary school.

Description: Princess line dress, 3 piece front, front side panel consists of 4 pieces that when stitched together form inset pocket, back 4 pieces, "V" neck collar, short sleeves back zip opening.

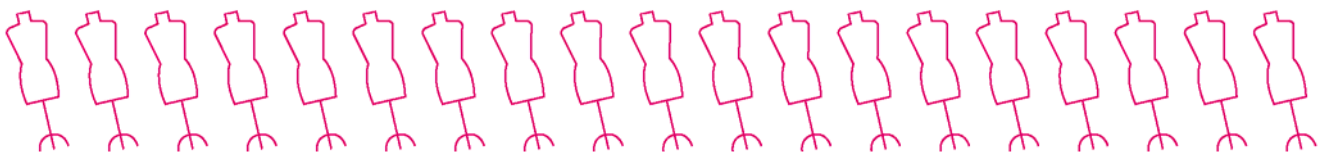
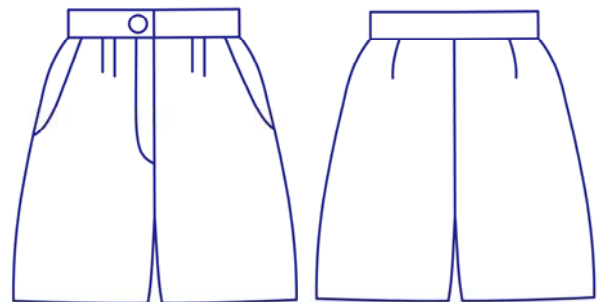


Style 900

Sizes: 4 ~ 14

Notes: Sized for high school.

Description: Tailored shorts, front has 2 pleats either side, side pockets, zip front, back darts fitted waistband.

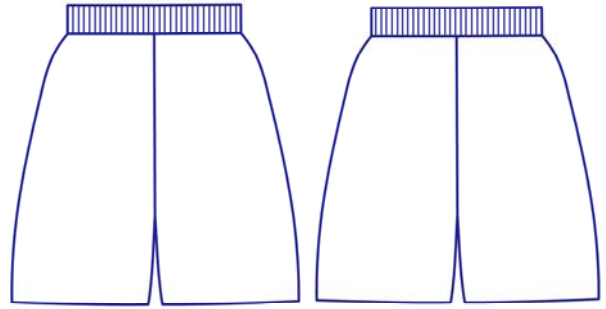


Style 901

Sizes: 4 - 16

Notes: Sized for primary school.

Description: Shorts, elastic waist, 2 zip pockets.



Style 925

Sizes: 4 - 14

Notes: Sized for primary school.

Description: Shorts (culottes), front 2 pleats each side, zip side pocket, front waistband, elastic back.

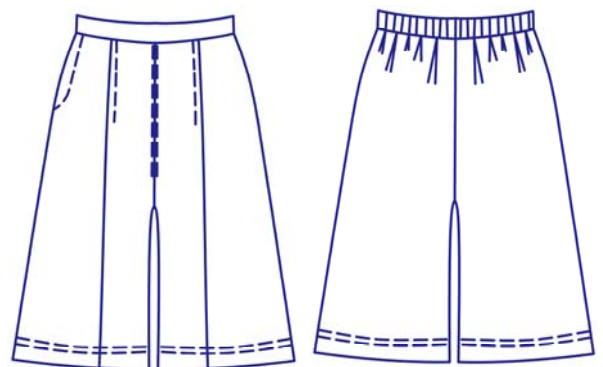


Style 926

Sizes: 4 - 16

Notes: Sized for primary school.

Description: Shorts (culottes), front has knife pleat on each side, zip pocket, front waistband and elastic back.





Website: <http://www.creativepatterns.com.au>
Email: information@creativepatterns.com.au

